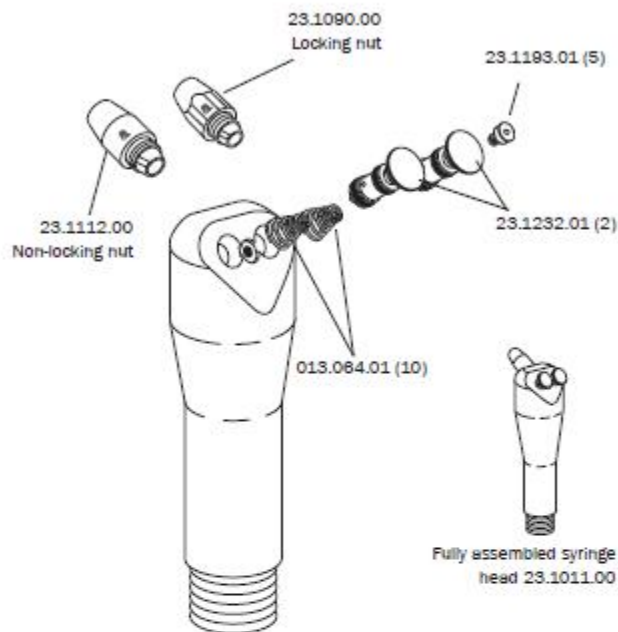


Autoclavable Traditional

Autoclavable Traditional Syringe

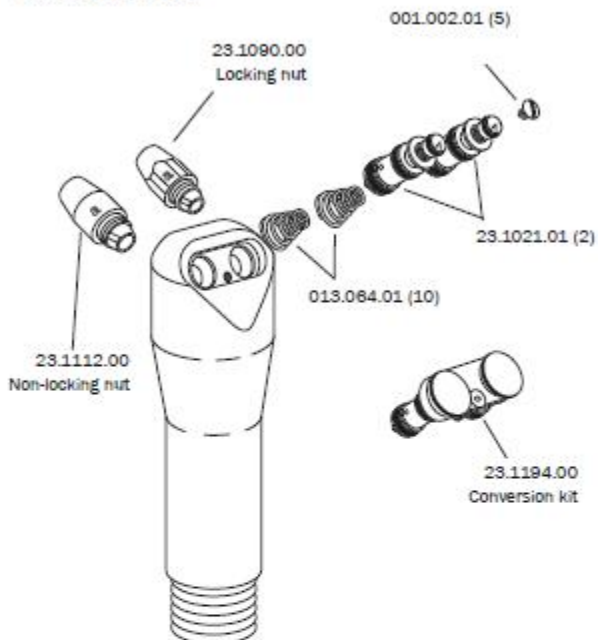
(beginning October 1995)



Autoclavable Traditional Syringe

(prior to October 1995)

Service Parts Only



Terminal Barb Assembly

Non-Quick-disconnect

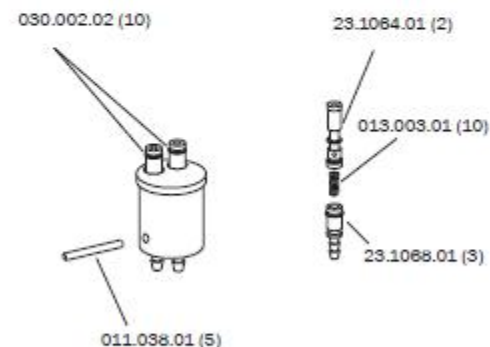
23.1110.00 2-barb




Terminal Barb Assemblies

Quick-disconnect

23.1067.00 2-barb



Standard Syringe Kits

	SYRINGE ASSEMBLIES (Include syringe, tubing and flow control clamp)		PART NUMBER	PART NUMBER	PRICE
			SURF	GRAY 3	
	With Terminal Barb Assembly 7' (2,134 mm)		23.1150.00	23.1302.00	
	With Terminal Barb Assembly 12' (3,657.6 mm)		23.1150.12	23.1311.00	
	With QD Terminal Barb Assembly 7' (2,134 mm)		23.1195.00	23.1303.00	