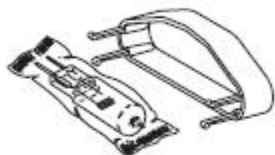


A-dec 500, Cascade, 6300, and Performer

Cascade and 571 Dental Light Bulb

- 75.0084.00 Holder Surf 4
- 75.0084.01 Holder White 2
- 28.1004.00 Bulb and holder Surf 4
- 28.1004.01 Bulb and holder White 2



- For Cascade and A-dec 571 dental lights
- Includes holder and halogen bulb 95W, 17V

Cascade Light Shield and Bracket Assembly

- 28.0503.01 Shield only
- 28.0503.02 Shield and nosepiece
- 28.1012.00 Shield bracket assy (2), Surf 4
- 28.1012.01 Shield bracket assy (2), White 2



- For A-dec 571 and Cascade lights

Pivot Stops

- 28.0679.01 (5)
for all lights after October 1987
- 28.0545.01 (5)
for all pre-Cascade unit- and post-mount lights
- 90.1044.00 Flexarm Stop Kit



28.0679.01



28.0545.01

Pre-Cascade, Cascade, and Performer On/Off Switch Kit

- 90.1039.00 Kit
- 28.0813.01 Long handle only, Surf 4
- 28.0813.02 Long handle only, Gray 3
- 28.1188.00 Short handle only



- Includes: toggle switch, (2) closed-end terminals and (2) On/Off switch handles

Pre-Cascade Dental Light Bulb

- 28.0682.00 Holder only
- 28.0704.00 Bulb and holder



- For pre-Cascade dental light
- Includes holder and halogen bulb 95W, 17V

Light Handle Kit

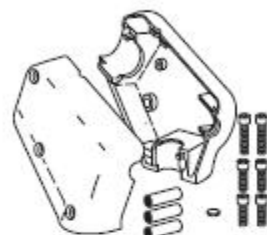
- 90.0367.01 Handle kit, Surf 4
- 90.0367.02 Handle kit, White 2



- Includes Loctite® and necessary hardware
- Includes both right and left handles

Light Switch Housing Replacement Kit

- 28.1464.01 Surf 4
- 28.1464.04 White 2



- Includes right housing, left housing, standoffs, screws, and pivot stop (28.0679.01)

Pre-Cascade and Cascade Lamp Socket Kit

- 90.0463.01



- To replace lamp socket for pre-Cascade and Cascade lights
- Includes lamp socket and wire assembly, and necessary hardware

A-dec 500 Light Post Trim Ring

- 77.0095.00 Surf 4
- 77.0095.01 White 2

